

ambition

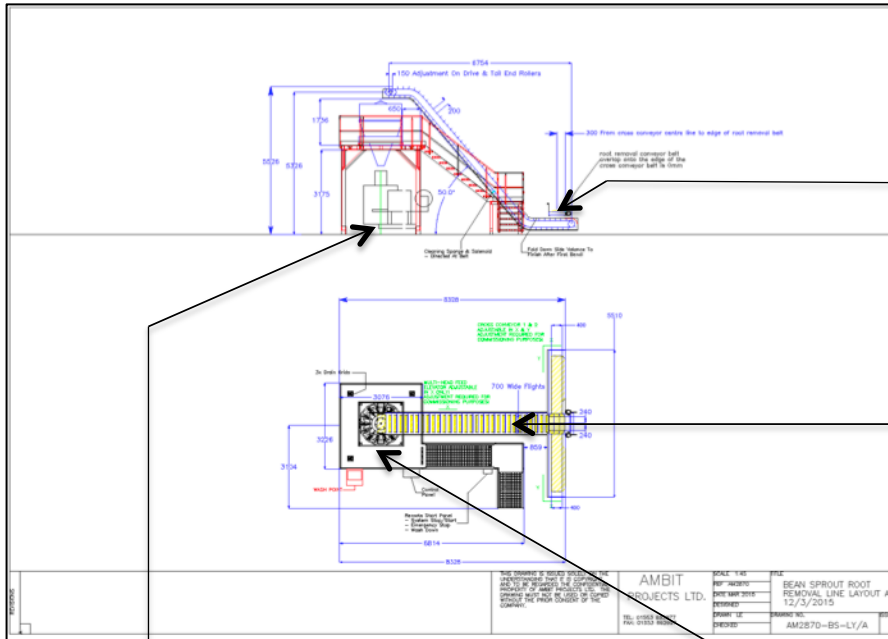
Beansprout Handling & Packaging

Project Tech

Project Overview:

- From the root removal equipment, two cross conveyors receive beansprouts and discharge into an elevator.
- The beansprouts are elevated up to a high level platform and discharges onto a multihead weighing unit.
- The weighed product discharges into the bagger unit where it is packed.

Product: Beansprouts **Line Capacity:** 6 ton/hr



Root removal conveyors discharging onto cross conveyors.



Elevating product up to a multihead weigher situated on a high level platform



Overview of cross conveyors, elevator, and support platform



Discharge from high level multihead weigher in to low level bagging unit



Discharge from the elevator on to the multihead weighing unit